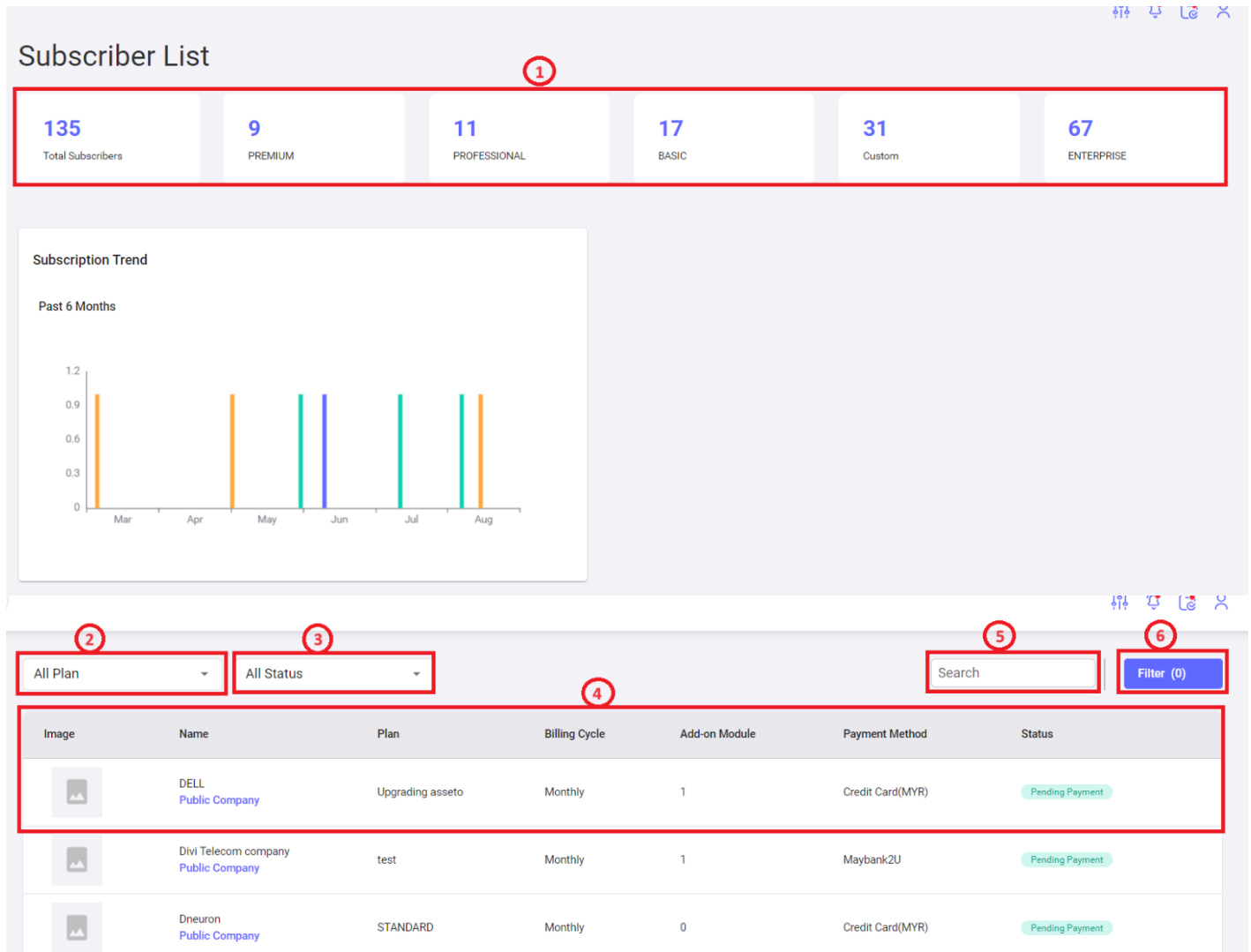


2. Subscriber Module Dashboard

Subscribers Module Dashboard:

The Subscribers Module Dashboard provides the information below.



1. **Widget:** To display the number of Subscribers against different types of plans and total number of subscribers.
2. **All Plan:** To apply filter condition based on different types of plans to display the list of Subscribers in a dynamic table.
3. **All Status:** To apply filter condition based on different status to display the list of Subscribers in a dynamic table. The different statuses are: Active, Inactive and Pending payment.
4. **List View:** List of Subscribers and related information displayed in a dynamic table.
5. **Search:** To search specific Subscriber details.

6. **Filter:** To apply additional filter condition with additional parameters to display the list of Subscribers in a dynamic table.
-
-

Revision #2

Created 11 September 2024 09:49:04 by Sushma Palapatta Chandran

Updated 13 September 2024 04:18:36 by Sushma Palapatta Chandran